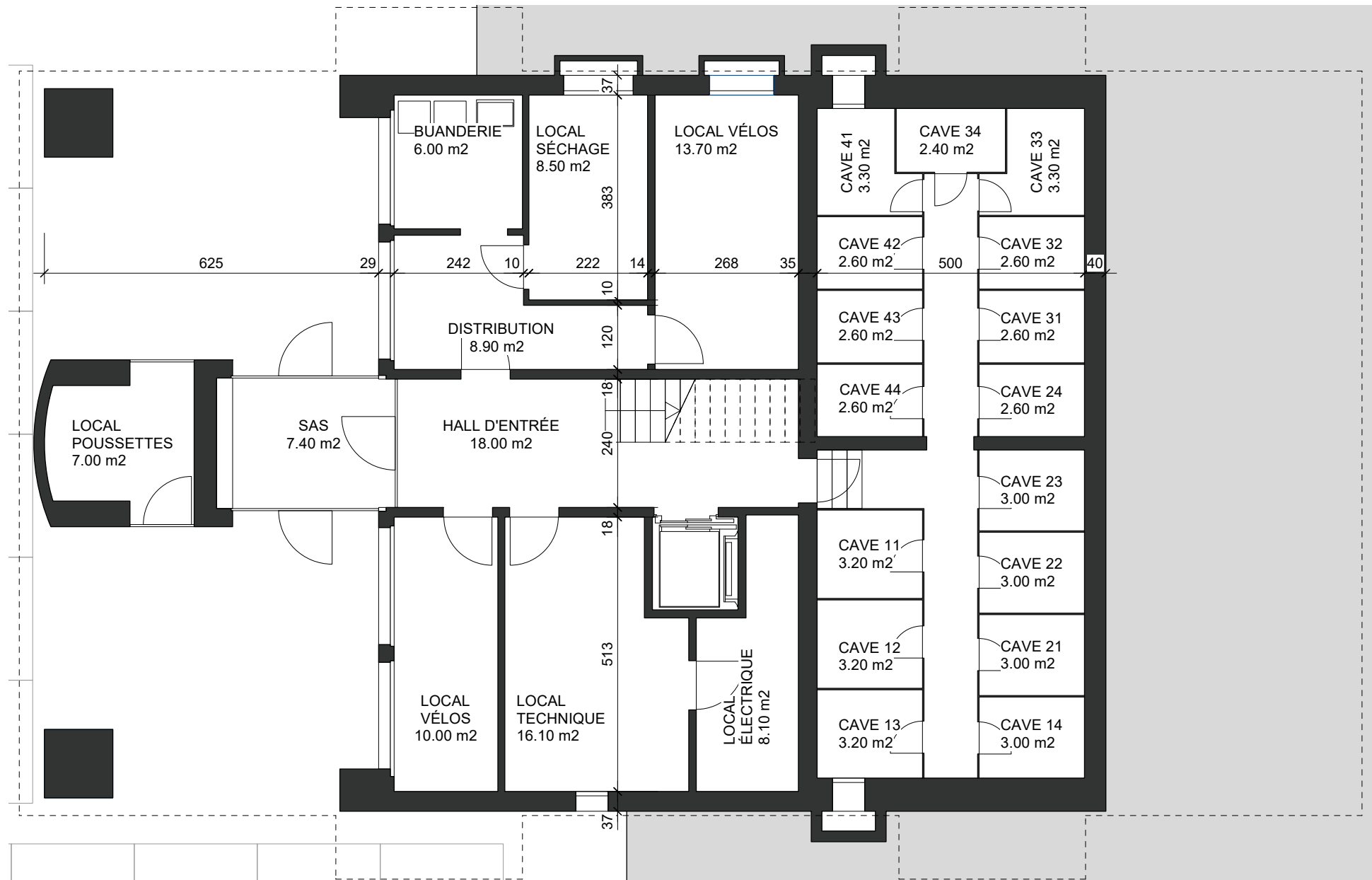


Deux bâtiments résidentiels

Vy d'Etra 67
Neuchâtel

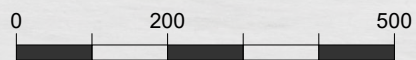
cpcn
GÉRANCE
CAISSE DE PENSIONS
CANTON DE NEUCHÂTEL

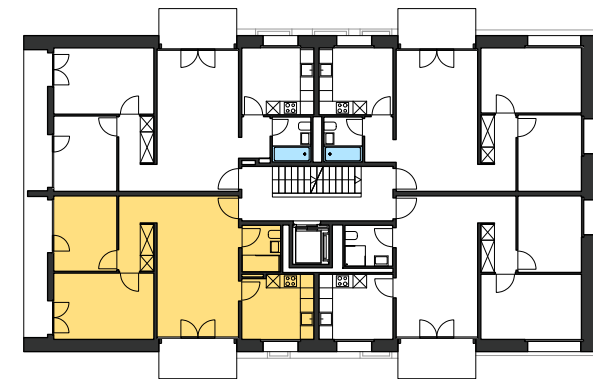
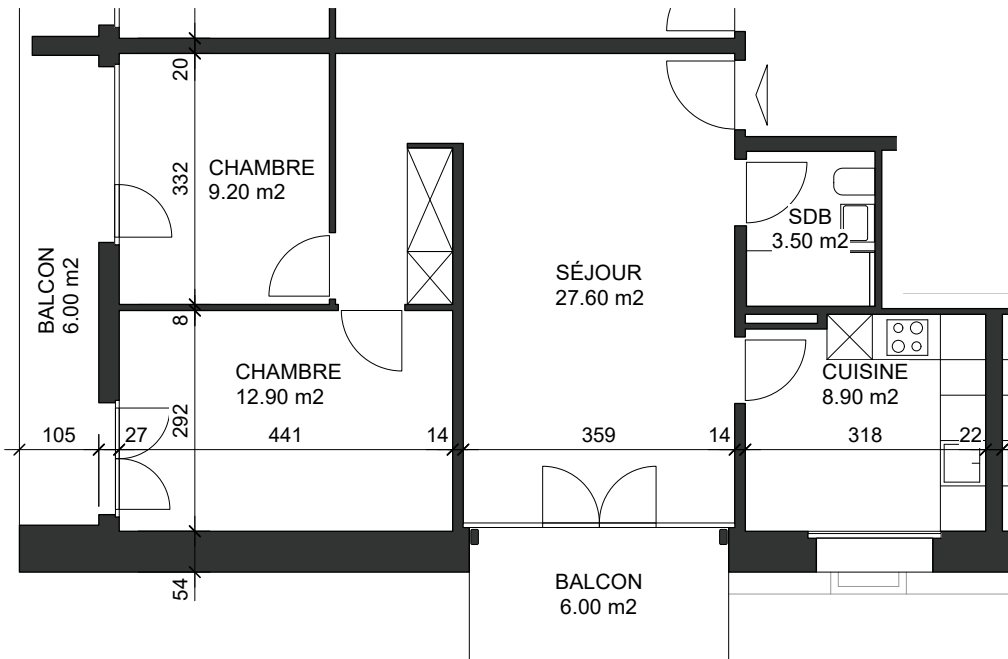




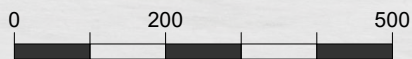
éch : 1/100

REZ-DE-CHAUSSÉE





éch : 1/100



1ER ÉTAGE

Surface lot 11 :

62.10 m²

Loyer net :

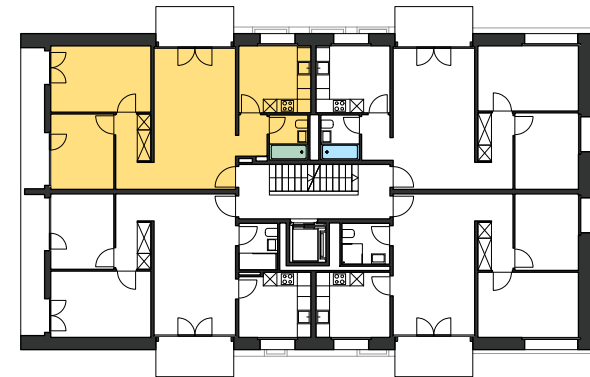
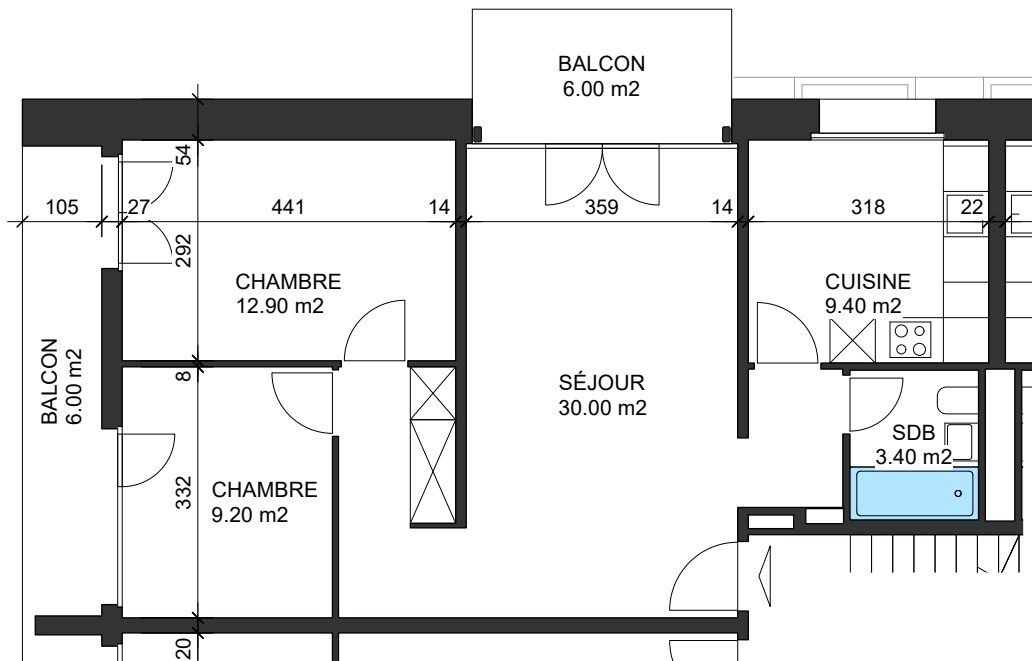
1420

Charges :

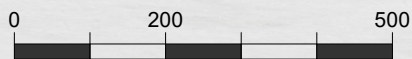
215

Total loyer brut :

1635



éch : 1/100



1ER ÉTAGE

Surface lot 12 :

64.90 m²

Loyer net :

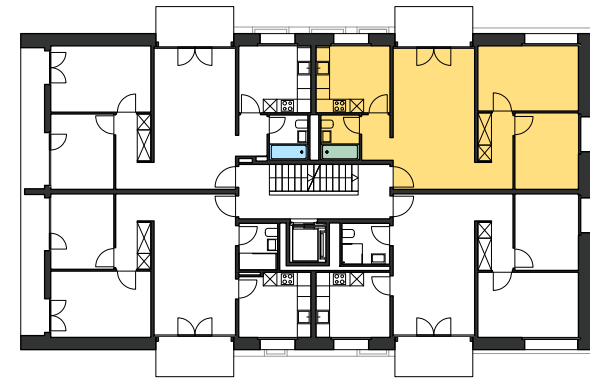
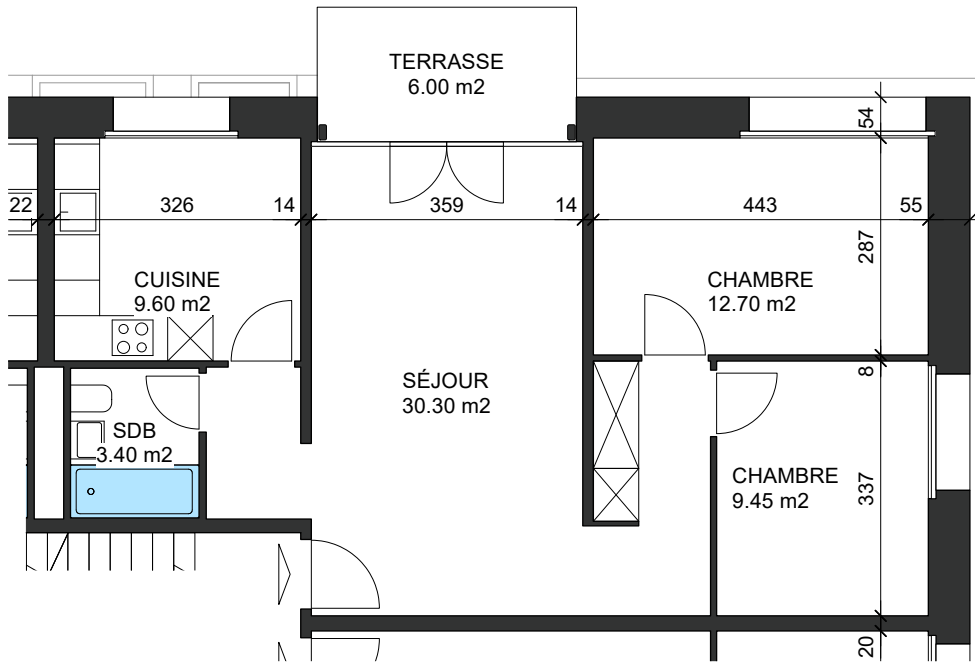
1420

Charges :

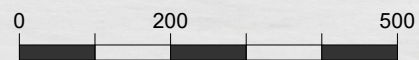
215

Total loyer brut :

1635



éch : 1/100

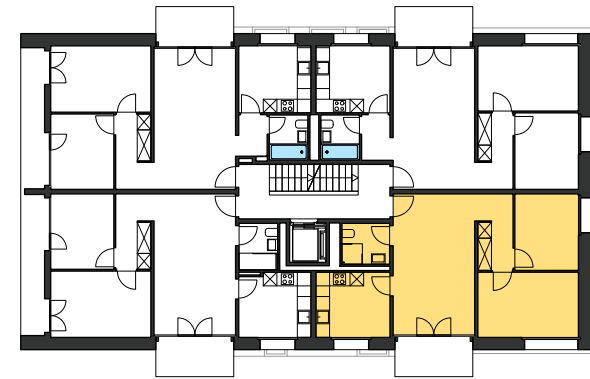
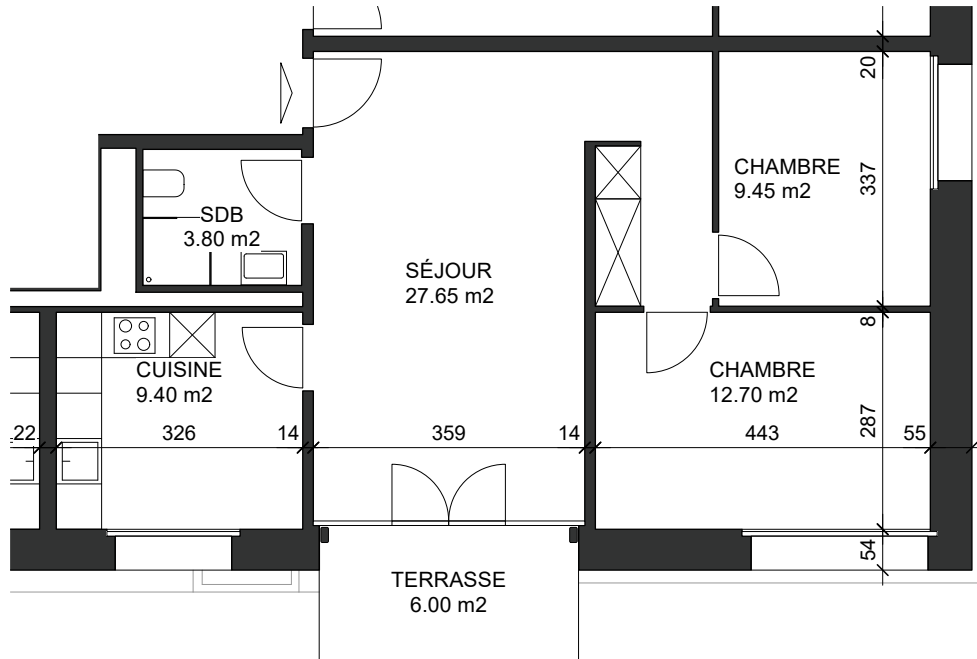


1ER ÉTAGE

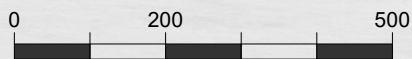
Surface lot 13 : 65.45 m²

Loyer net : 1350
Charges : 215

Total loyer brut : 1565



éch : 1/100



1ER ÉTAGE

Surface lot 14 :

63.00 m²

Loyer net :

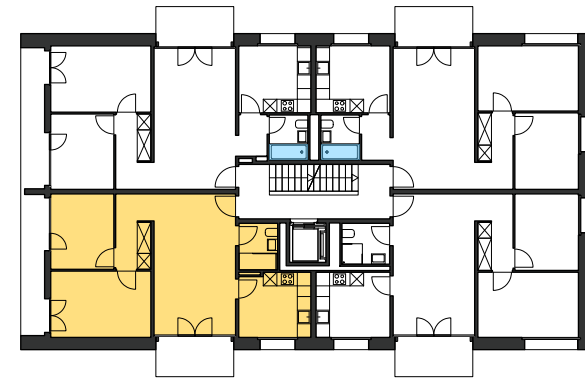
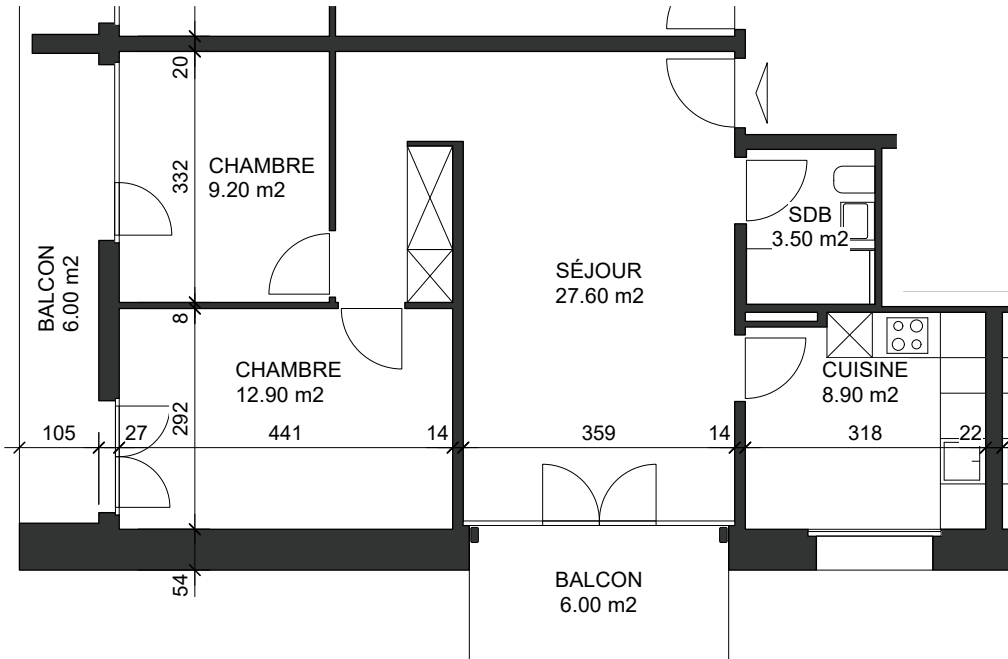
1350

Charges :

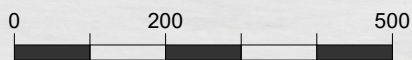
215

Total loyer brut :

1565



éch : 1/100



2ÈME ÉTAGE

Surface lot 21 :

62.10 m²

Loyer net :

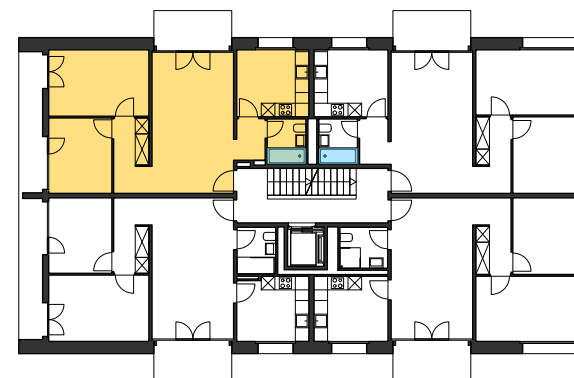
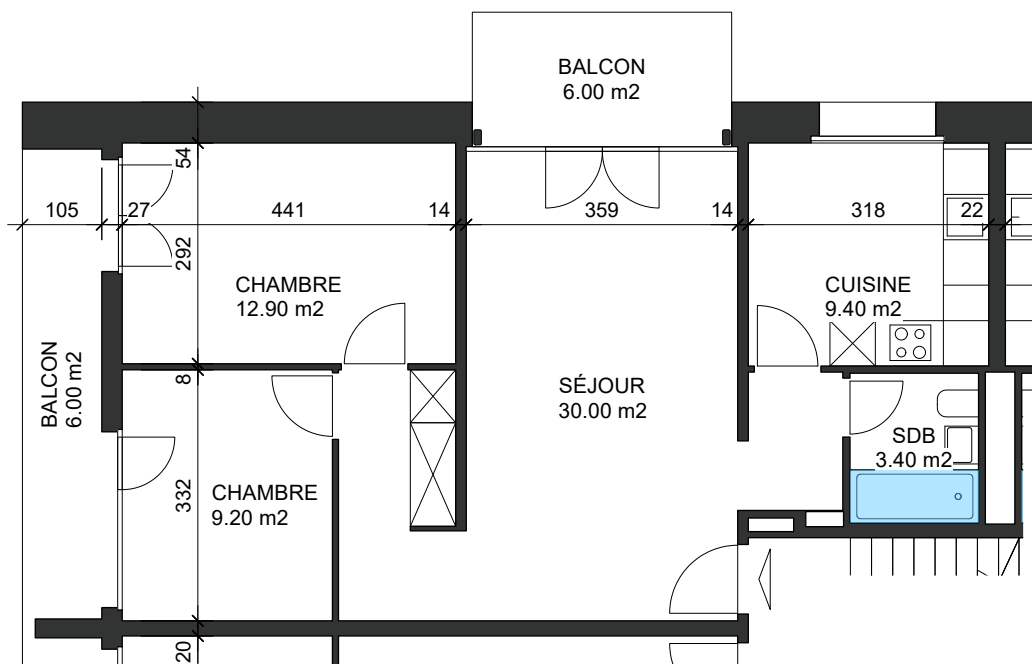
1420

Charges :

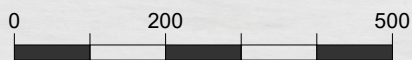
215

Total loyer brut :

1635



éch : 1/100



2ÈME ÉTAGE

Surface lot 22 :

64.90 m²

Loyer net :

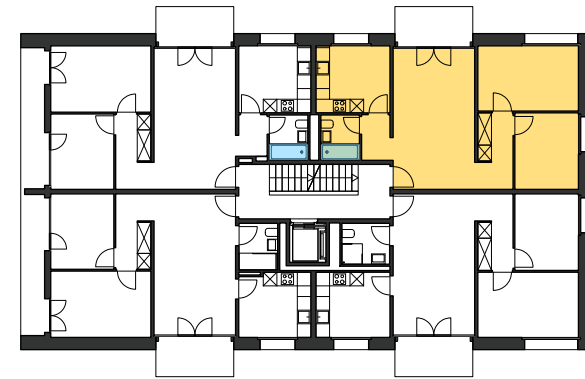
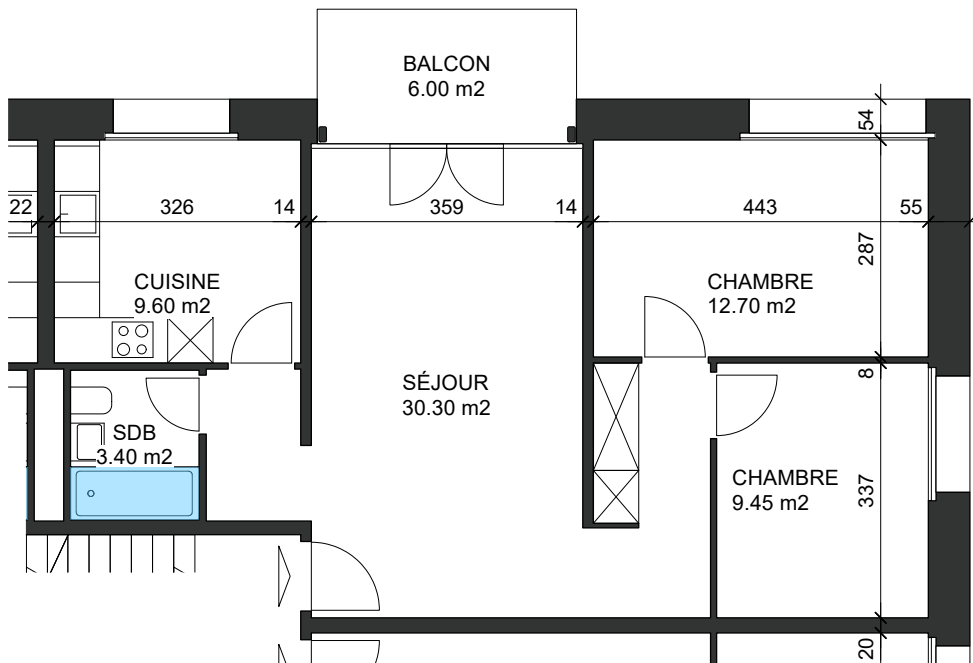
1420

Charges :

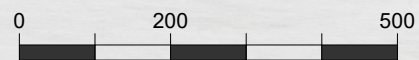
215

Total loyer brut :

1635



éch : 1/100



2ÈME ÉTAGE

Surface lot 23 :

65.45 m²

Loyer net :

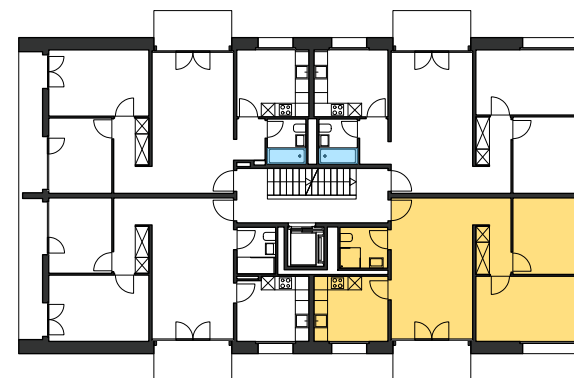
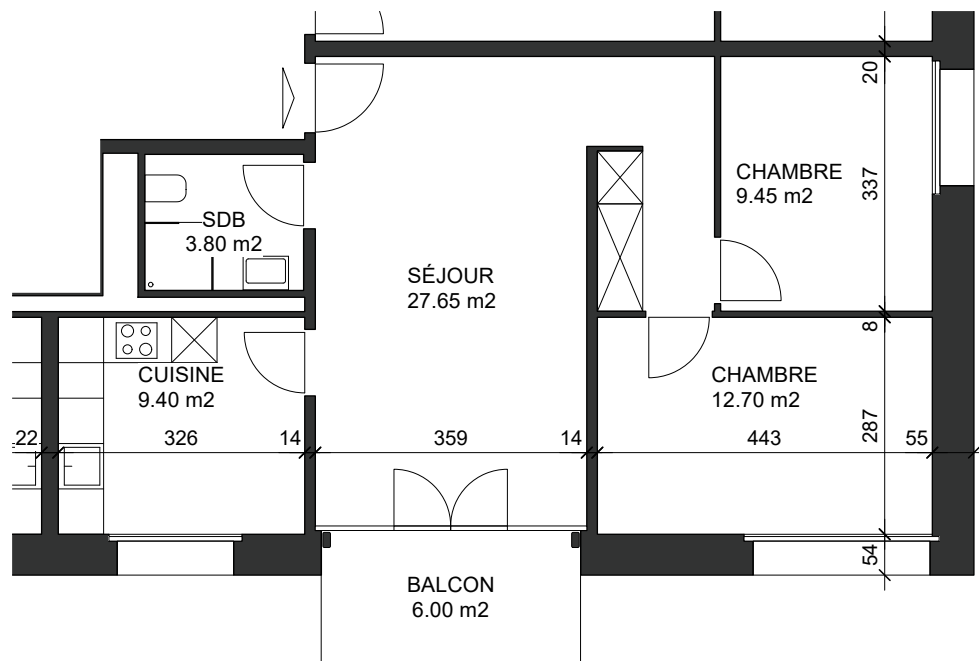
1350

Charges :

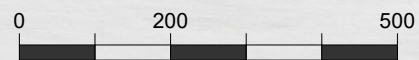
215

Total loyer brut :

1565



éch : 1/100



2ÈME ÉTAGE

Surface lot 24 :

63.00 m²

Loyer net :

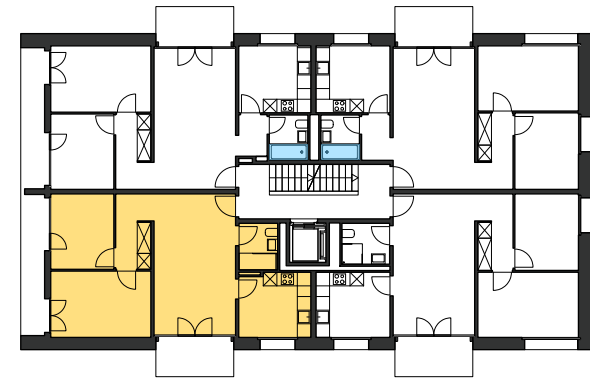
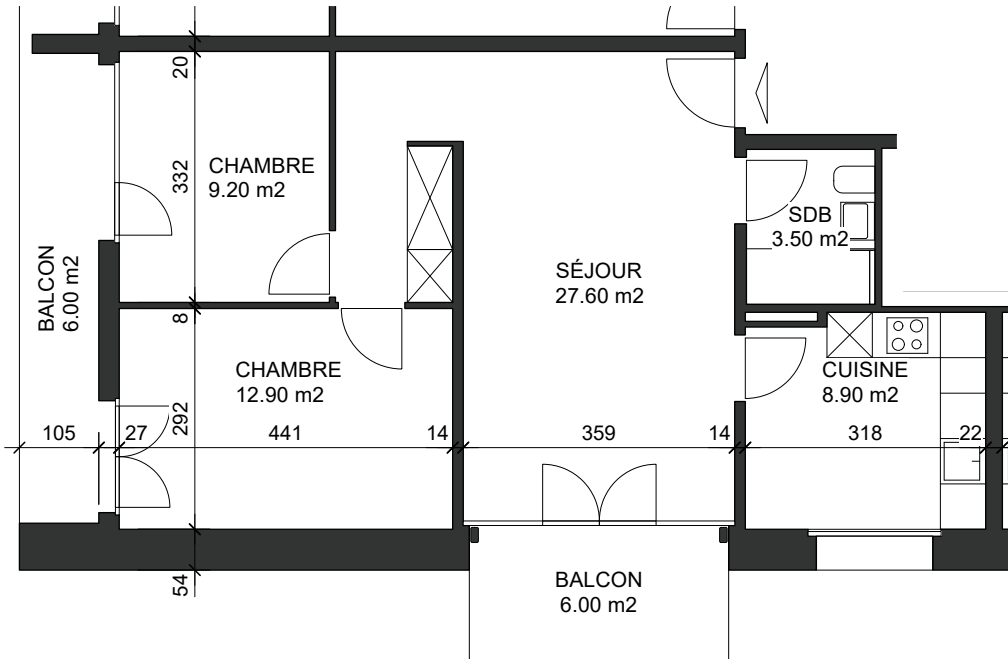
1350

Charges :

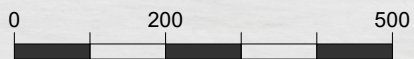
215

Total loyer brut :

1565



éch : 1/100



3ÈME ÉTAGE

Surface lot 31 :

62.10 m²

Loyer net :

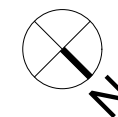
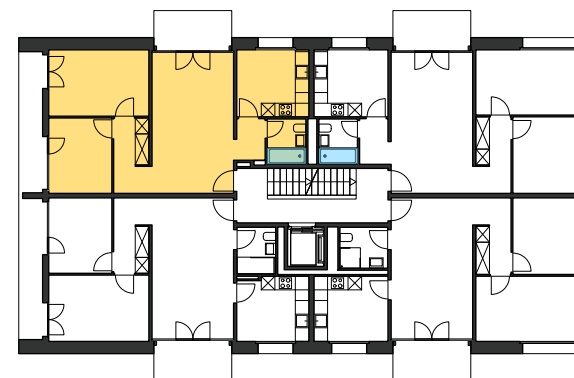
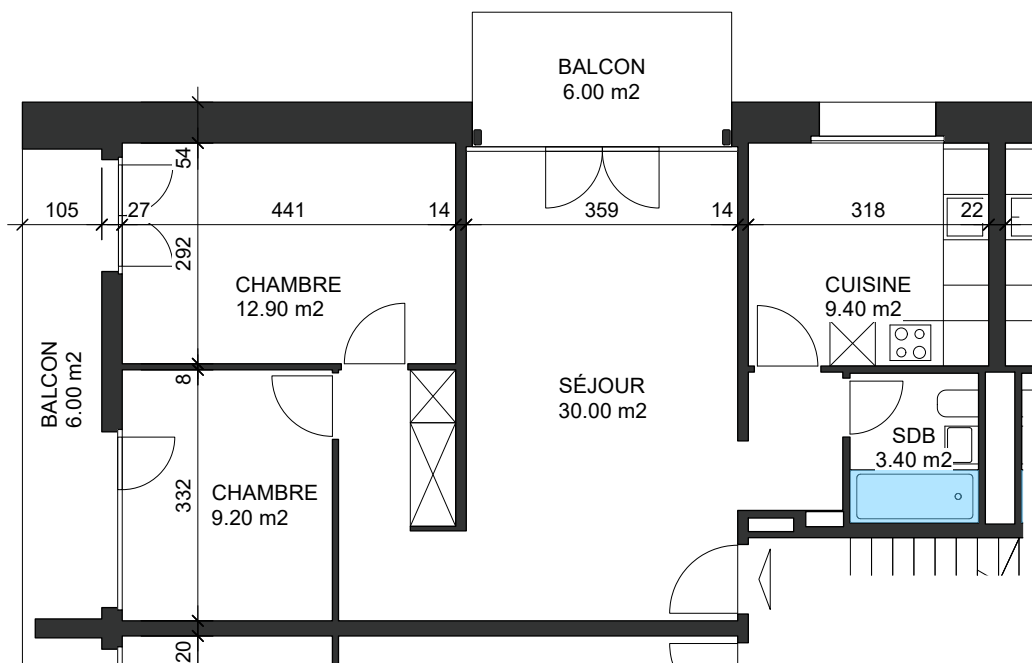
1470

Charges :

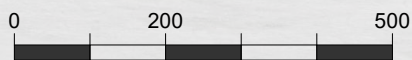
215

Total loyer brut :

1685



éch : 1/100



3ÈME ÉTAGE

Surface lot 32 :

64.90 m²

Loyer net :

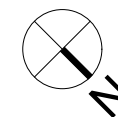
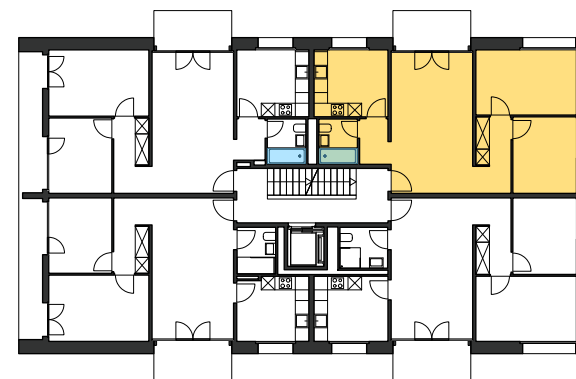
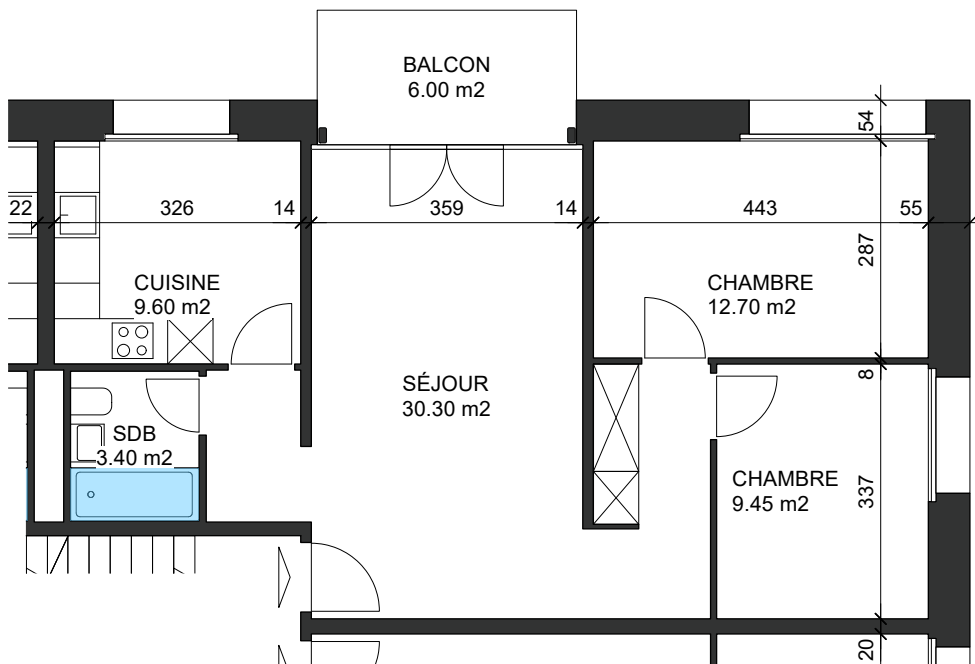
1470

Charges :

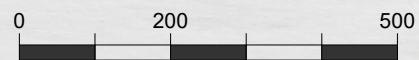
215

Total loyer brut :

1685



éch : 1/100



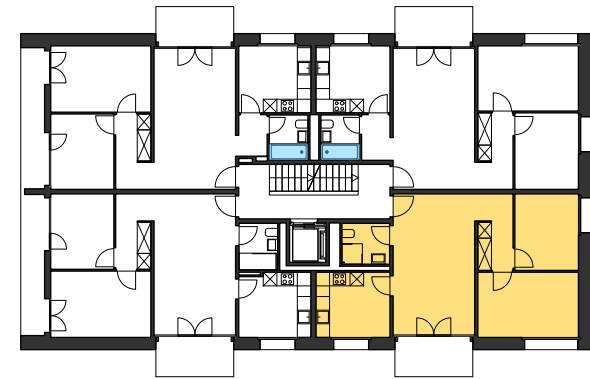
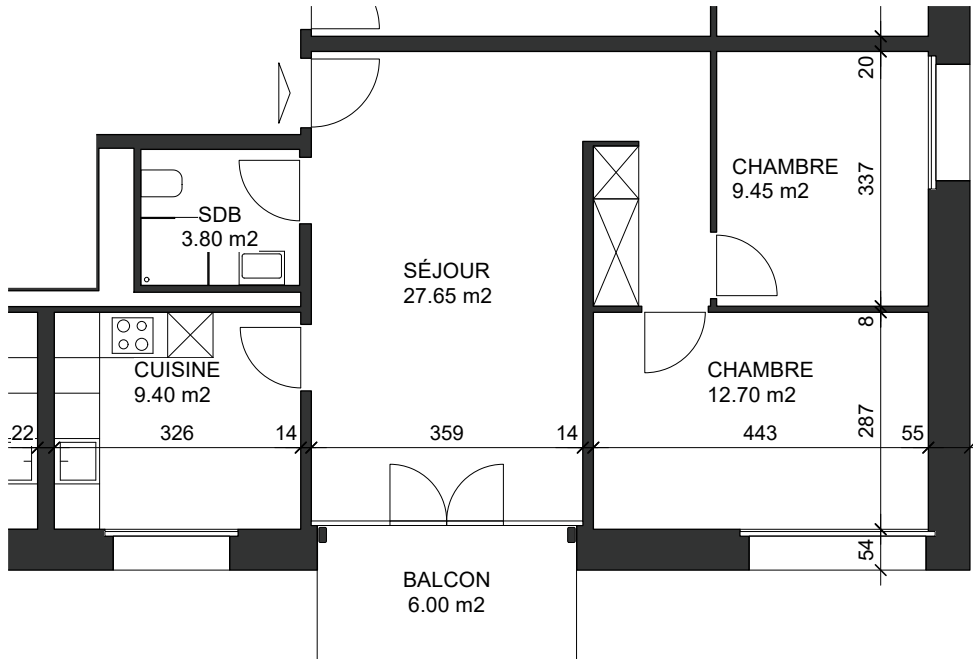
3ÈME ÉTAGE

Surface lot 33 : 65.45 m²

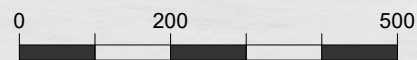
Loyer net : 1400
Charges : 215

Total loyer brut : 1615





éch : 1/100



3ÈME ÉTAGE

Surface lot 34 :

63.00 m²

Loyer net :

1400

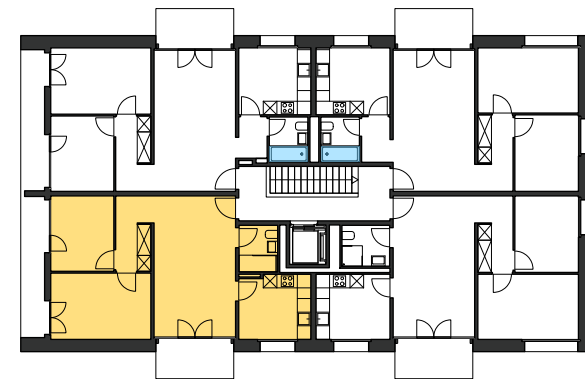
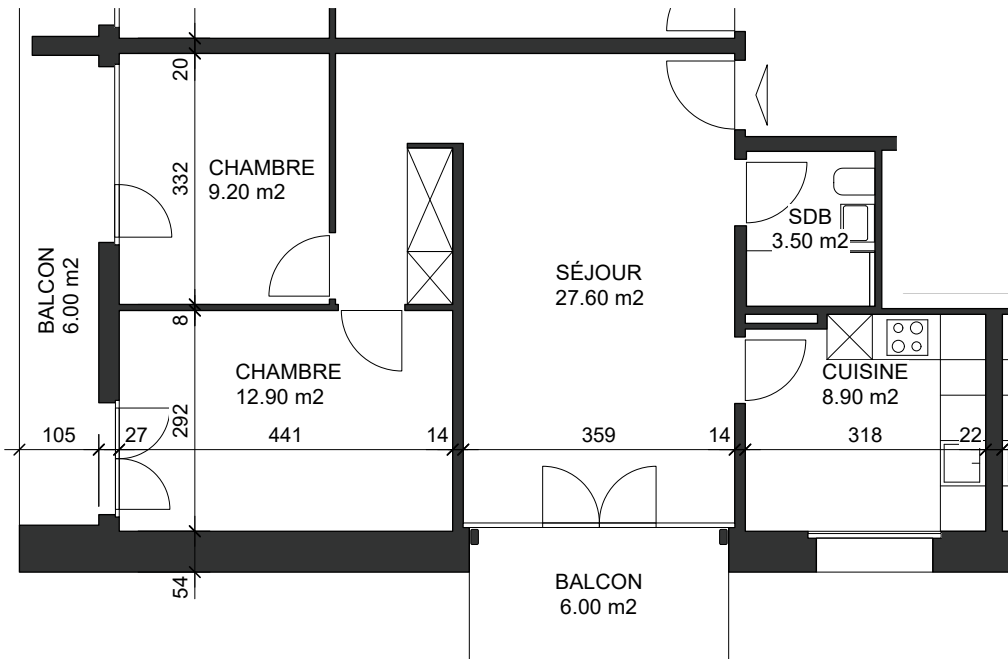
Charges :

215

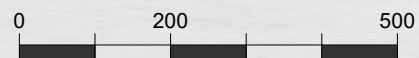
Total loyer brut :

1615

Réservé



éch : 1/100



4ÈME ÉTAGE

Surface lot 41 :

62.10 m²

Loyer net :

1470

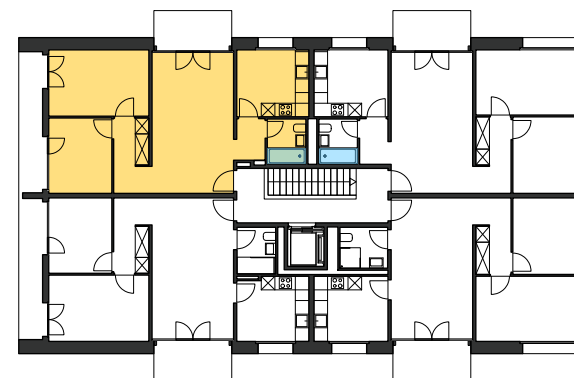
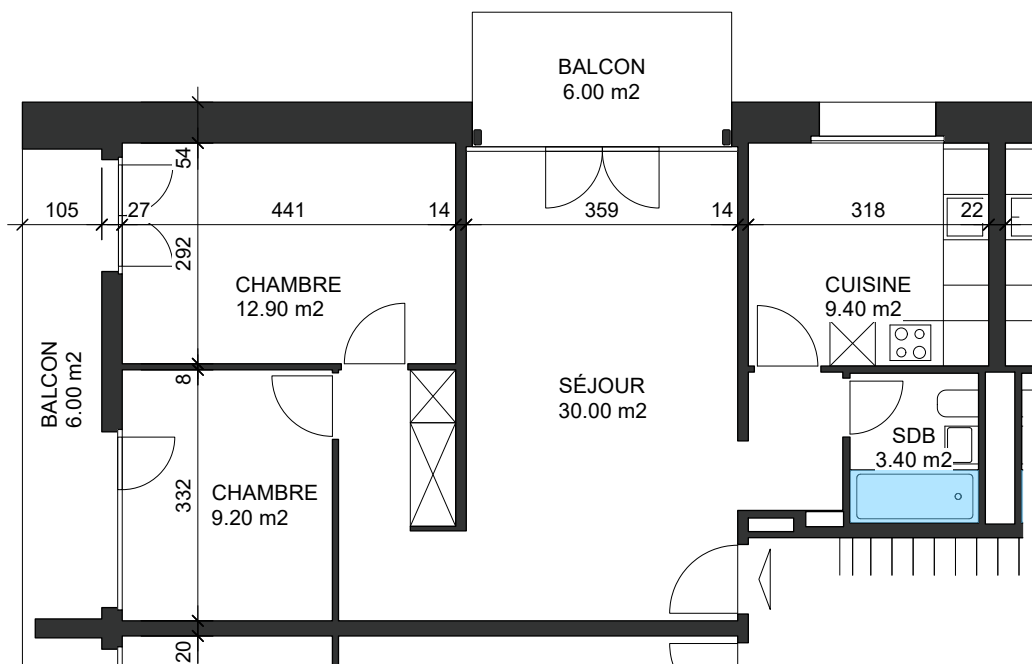
Charges :

215

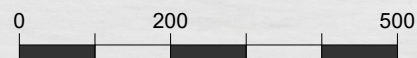
Total loyer brut :

1685

Réservé



éch : 1/100



4ÈME ÉTAGE

Surface lot 42 :

64.90 m²

Loyer net :

1470

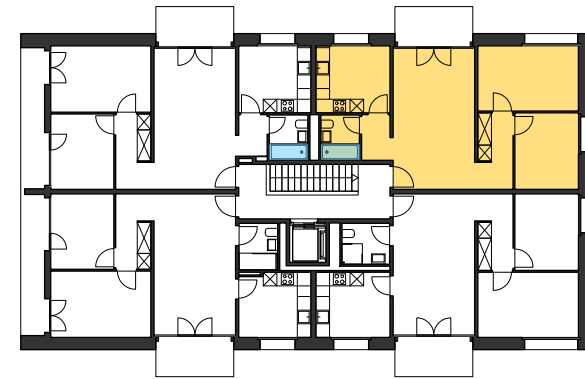
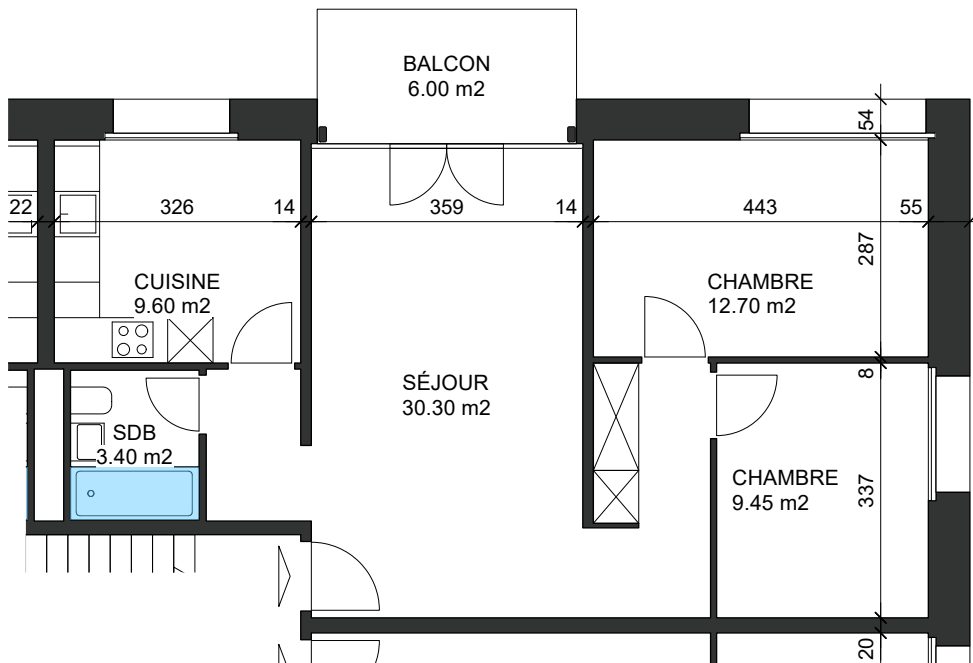
Charges :

215

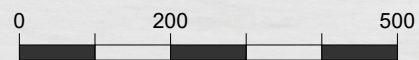
Total loyer brut :

1685

Réservé



éch : 1/100



4ÈME ÉTAGE

Surface lot 43 :

65.45 m²

Loyer net :

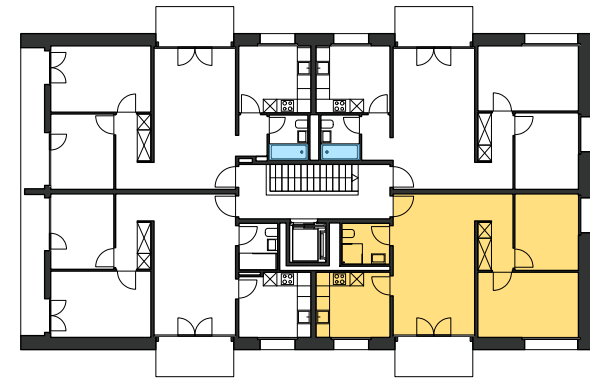
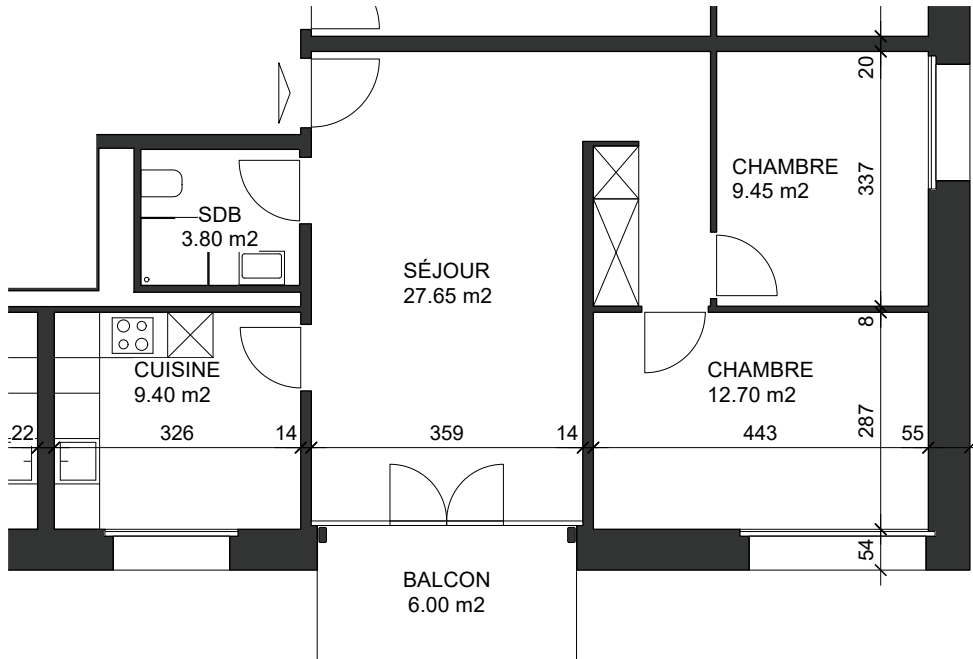
1400

Charges :

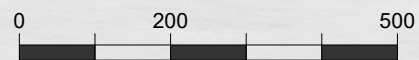
215

Total loyer brut :

1615



éch : 1/100



4ÈME ÉTAGE

Surface lot 44 :

63.00 m²

Loyer net :

1400

Charges :

215

Total loyer brut :

1615